



Warren Homes, LLC

Distinctive Designs, Inspired Living

www.WarrenHomesLLC.com

Date _____

Office:
317 N. Buckner St
Derby, KS 67037
Ph. (316) 788-3794
Fax (316) 788-3795

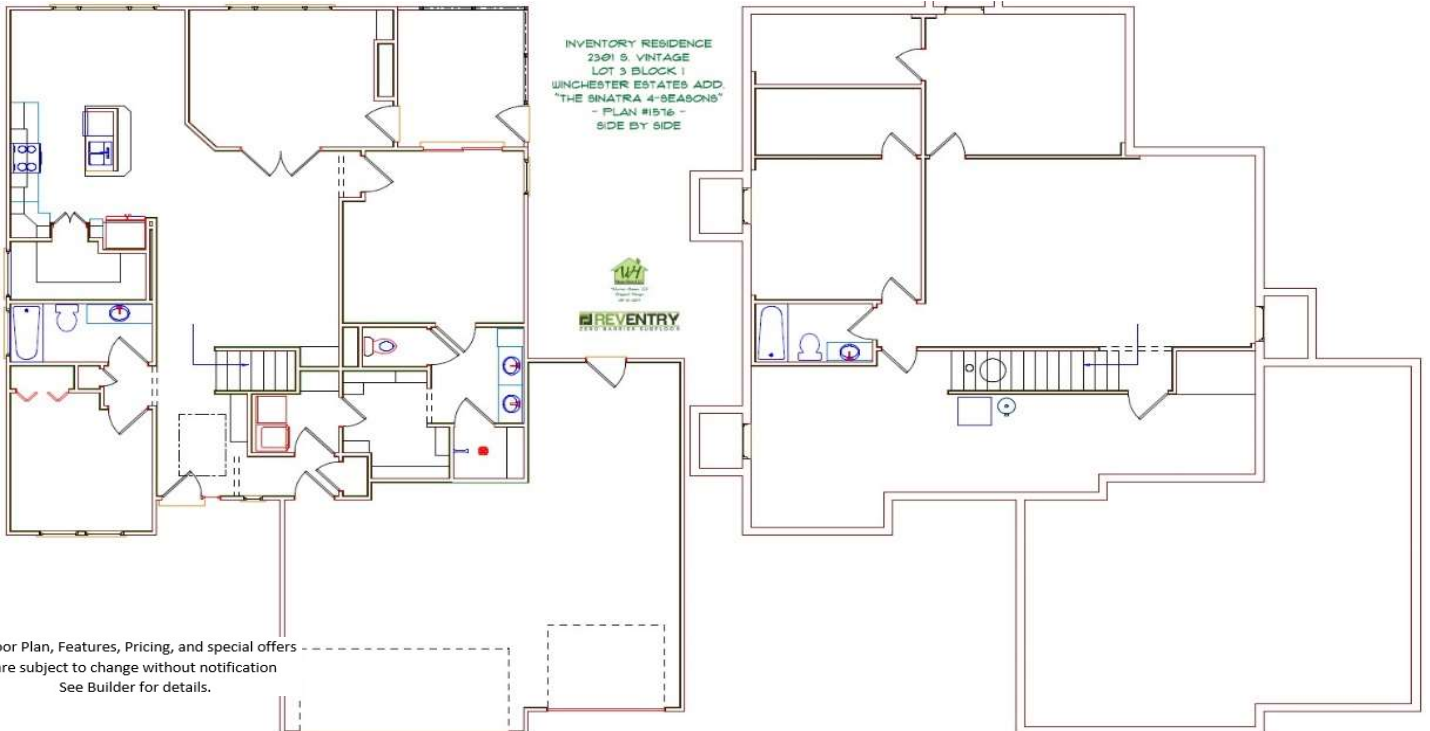
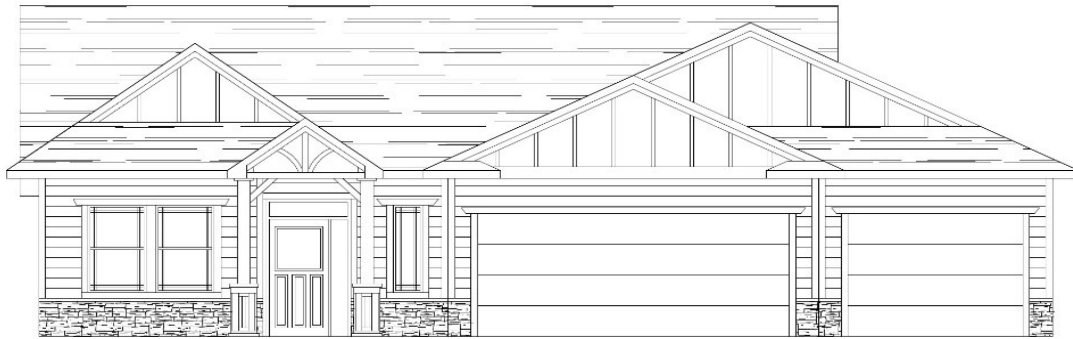


TOTAL FINISHED SQ. FT.:	3,000
MAIN LEVEL SQ. FT.:	1,576
BASEMENT FINISH SQ. FT.:	1,424
GARAGE SQ. FT.:	1176
# FINISHED BEDROOMS:	5
# FINISHED BATHS:	3

(NOTE: SQ. FT. is approximate & may vary)

BUYERS NAME:
ADDRESS:
DEVELOPMENT:
PLAN NAME / #: The Sinatra 4-Seasons 1576

BASE PRICE:	See Builder for
LAND ALLOWANCE:	Current Pricing
UPGRADED FEATURES:	and Plan Details
SALE PRICE AS SHOWN:	



*Floor Plan, Features, Pricing, and special offers are subject to change without notification. See Builder for details.