



Warren Homes, LLC

Distinctive Designs, Inspired Living

www.WarrenHomesLLC.com

Date _____

Office:
317 N. Buckner St
Derby, KS 67037
Ph. (316) 788-3794
Fax (316) 788-3795

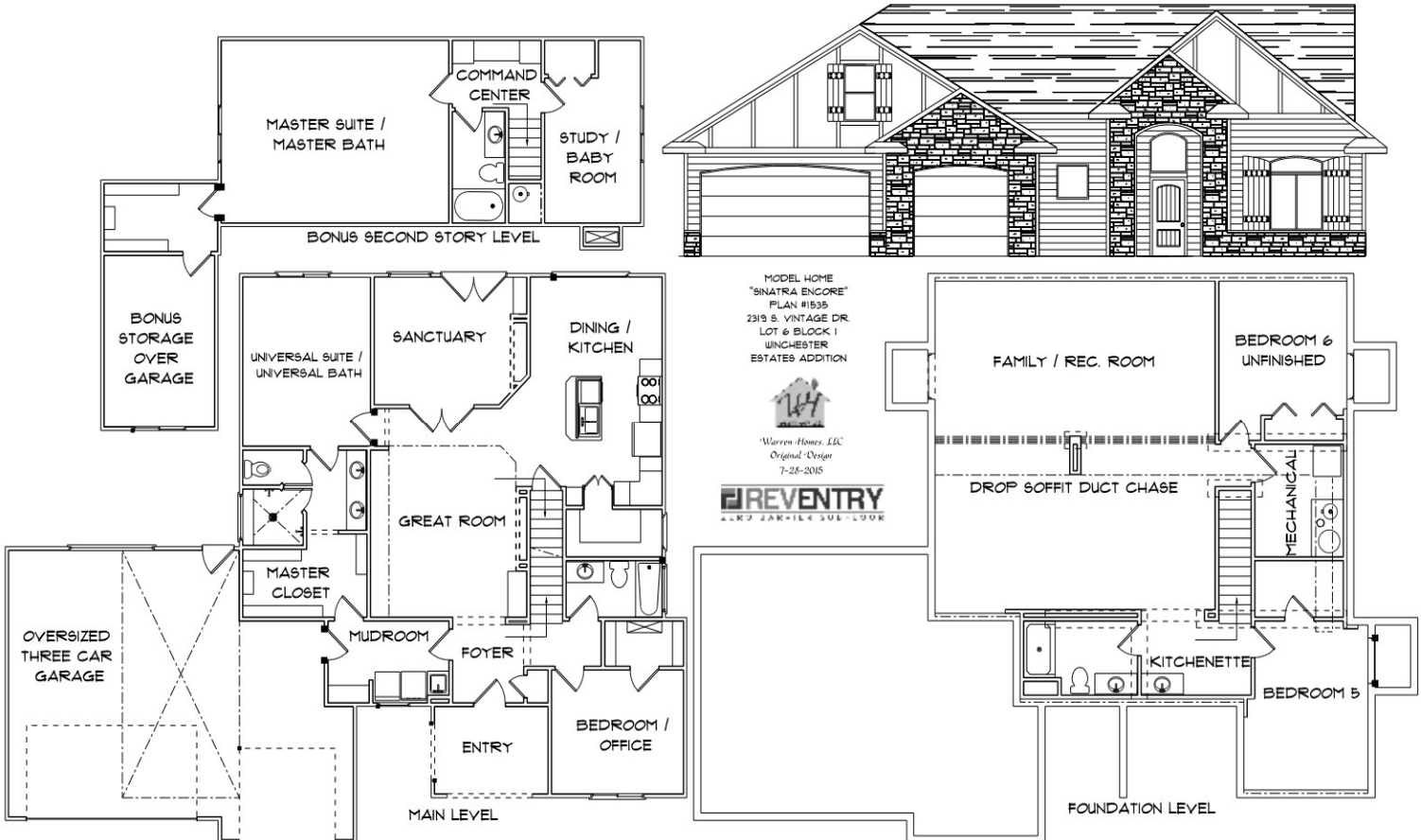


TOTAL FINISHED SQ. FT.:	3,575
MAIN LEVEL SQ. FT.:	2,275
BASEMENT FINISH SQ. FT.:	1,300
GARAGE SQ. FT.:	650
# FINISHED BEDROOMS:	6
# FINISHED BATHS:	4

(NOTE: SQ. FT. is approximate & may vary)

BUYERS NAME:
ADDRESS:
DEVELOPMENT:
PLAN NAME / #: Sinatra Encore - 1530

BASE PRICE:	See Builder for
LAND ALLOWANCE:	Current Pricing
UPGRADED FEATURES:	and Plan Details
SALE PRICE AS SHOWN:	



MODEL HOME
"SINATRA ENCORE"
PLAN #1530
2319 S. VINTAGE DR.
LOT 6 BLOCK 1
WINCHESTER
ESTATES ADDITION

Warren Homes, LLC
Original Design
7-26-2015

*Floor Plan, Features, Pricing, and special offers are subject to change without notification. See Builder for details.