



Warren Homes, LLC

Distinct Designs, Built for Life

www.WarrenHomesLLC.com

Date _____

Office:
317 N. Buckner St
Derby, KS 67037
Ph. (316) 788-3794
Fax (316) 788-3795

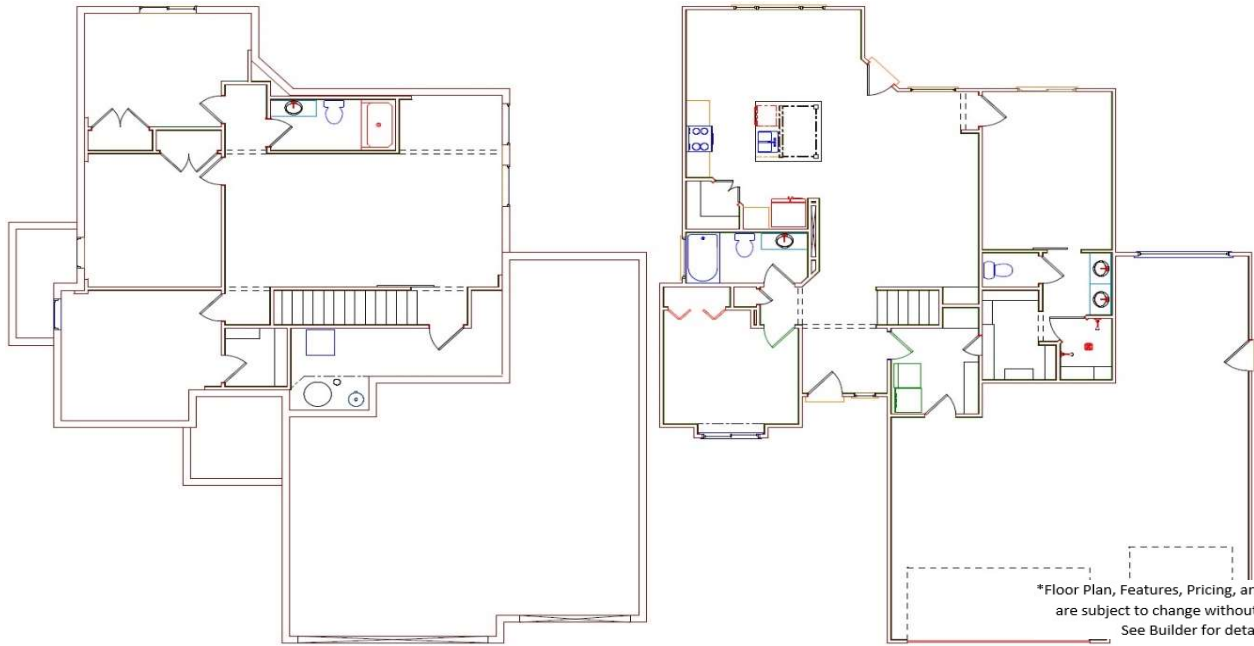
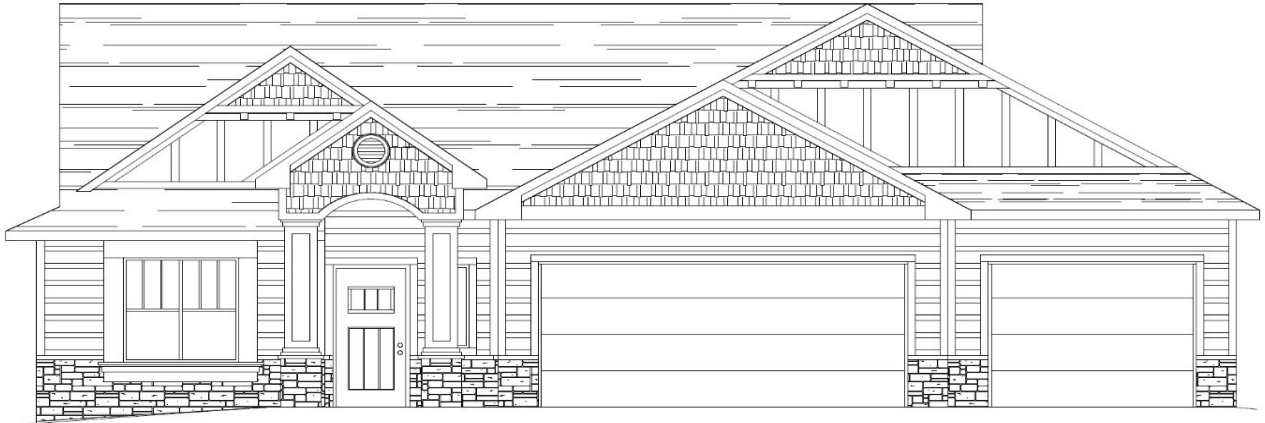


TOTAL FINISHED SQ. FT.:	2,540
MAIN LEVEL SQ. FT.:	1,340
BASEMENT FINISH SQ. FT.:	1,200
GARAGE SQ. FT.:	920
# FINISHED BEDROOMS:	5
# FINISHED BATHS:	3

(NOTE: SQ. FT. is approximate & may vary)

BUYERS NAME: Model Home
ADDRESS: _____
DEVELOPMENT: _____
PLAN NAME / #: The Sinatra Classic / #1340

BASE PRICE:	See Builder for
LAND COST:	Current Pricing &
UPGRADED FEATURES:	Plan Details
SALE PRICE AS SHOWN:	



*Floor Plan, Features, Pricing, and special offers are subject to change without notification. See Builder for details.