



# Warren Homes, LLC

*Distinctive Designs, Inspired Living*

www.WarrenHomesLLC.com

Date \_\_\_\_\_

Office:  
317 N. Buckner St  
Derby, KS 67037  
Ph. (316) 788-3794  
Fax (316) 788-3795

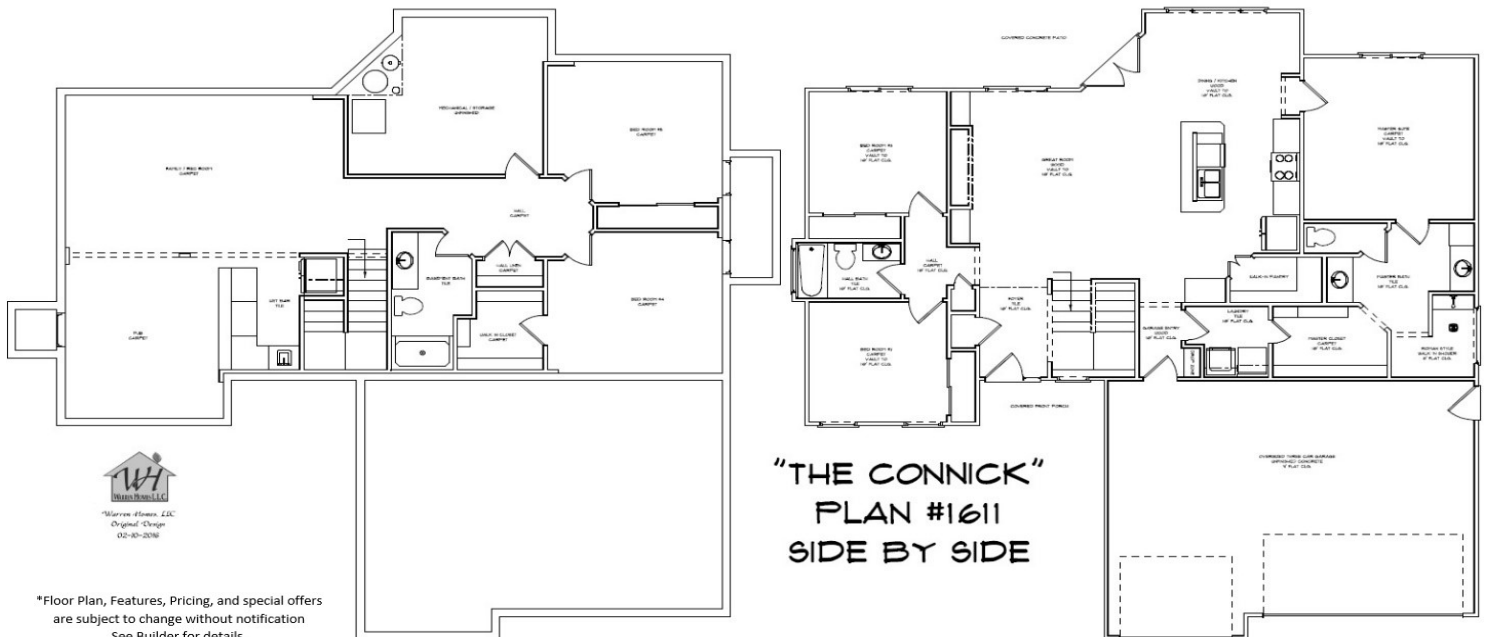


<b>TOTAL FINISHED SQ. FT.:</b>	<b>3,000</b>
<b>MAIN LEVEL SQ. FT.:</b>	<b>1,611</b>
<b>BASEMENT FINISH SQ. FT.:</b>	<b>1,389</b>
<b>GARAGE SQ. FT.:</b>	<b>700</b>
<b># FINISHED BEDROOMS:</b>	<b>5</b>
<b># FINISHED BATHS:</b>	<b>3</b>

(NOTE: SQ. FT. is approximate & may vary)

**BUYERS NAME:**  
**ADDRESS:**  
**DEVELOPMENT:**  
**PLAN NAME / #:** Connick Bar Side - 1611

<b>BASE PRICE:</b>	See Builder for
<b>LAND ALLOWANCE:</b>	Current Pricing
<b>UPGRADED FEATURES:</b>	and Plan Details
<b>SALE PRICE AS SHOWN:</b>	



**"THE CONNICK"  
PLAN #1611  
SIDE BY SIDE**



\*Floor Plan, Features, Pricing, and special offers are subject to change without notification. See Builder for details.