



Warren Homes, LLC

Distinctive Designs, Built For Life

www.WarrenHomesLLC.com

Date _____

Office:
317 N. Buckner St
Derby, KS 67037
Ph. (316) 788-3794
Fax (316) 788-3795



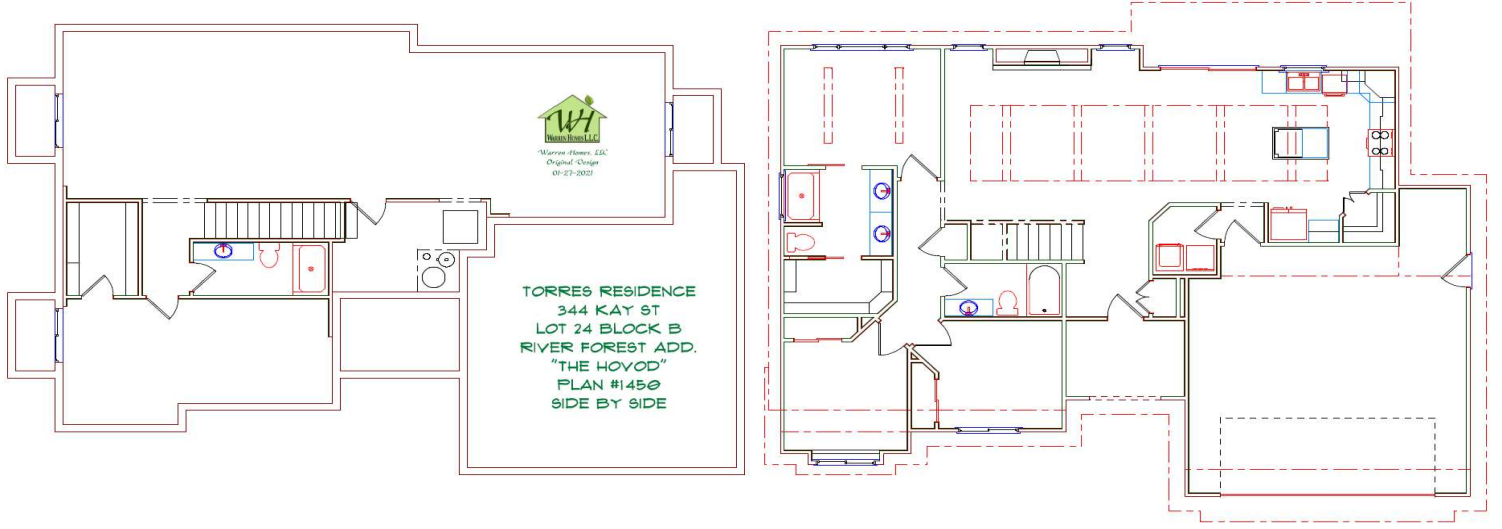
TOTAL FINISHED SQ. FT.:	2,000
MAIN LEVEL SQ. FT.:	1,460
BASEMENT FINISH SQ. FT.:	540
GARAGE SQ. FT.:	600
# FINISHED BEDROOMS:	3
# FINISHED BATHS:	2

(NOTE: SQ. FT. is approximate & may vary)

BUYERS NAME: Inventory Home
ADDRESS: 429 Karla Ave
DEVELOPMENT: River Forest Addition
PLAN NAME / #: The Valhalla / #1460

BASE PRICE:	\$236,900.00
LAND COST:	\$15,000.00
UPGRADED FEATURES:	\$48,000.00
SALE PRICE AS SHOWN:	\$299,900.00

\$16k Landscape Package #4 **IS NOT** included in S.P.A.S.



*Floor Plan, Features, Pricing, and special offers are subject to change without notification. See Builder for details.